

产品特性/Product Features

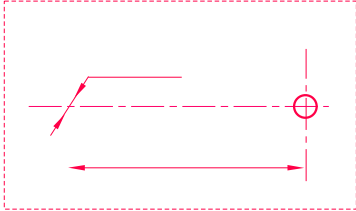
- IP6K9K
- 50A 85°C
- 12-750VDC
- 1000M 1000VDC IEC 60664-1
-

触点参数 / Contact parameters

		1a	
		1m (at 20A)	
		50A	
		2×10 ⁵	
		450V型	750V型
		1000VDC	1000VDC
		500A (320VDC)1	500A (320VDC)1
		22.5kW	37.5kW
1		1.5×10 ⁴ 450VDC, 50A	4×10 ³ 750VDC, 50A
		2×10 ⁴ 450VDC,50A)	1×10 ⁴ 750VDC,50A
2		50A:	
		80A:10min	
		120A:60s	
		500A:1s	
1	23	0.6s:5.4s	
2	85	14 mm ² " "	



Mounting hole size



Wiring diagram

